

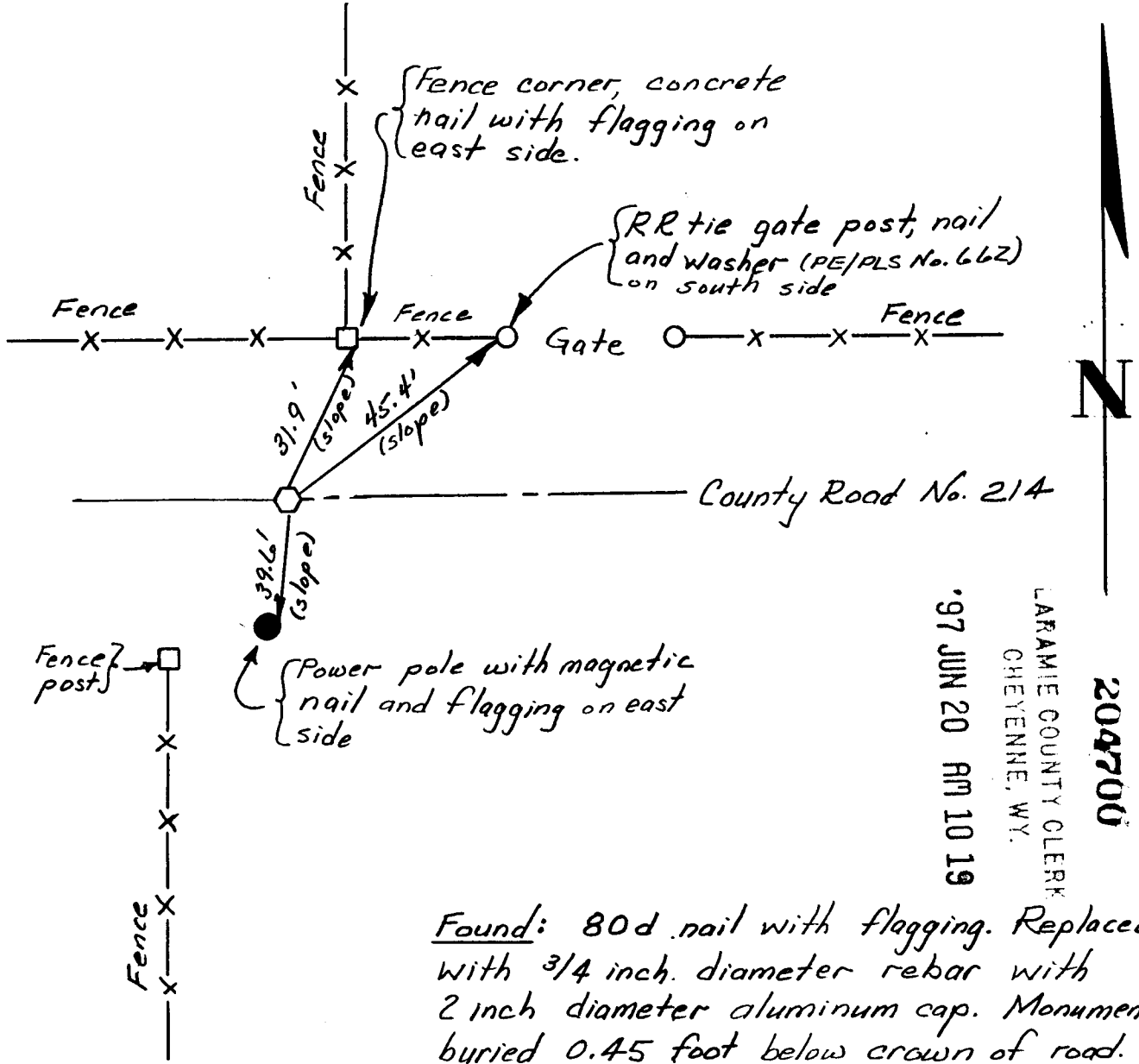
# State of Wyoming Corner Record

(In compliance with the CORNER PERPETUATION AND FILING ACT, Wyoming Statutes, 1977, Section 36-11-101, et. seq., and the Rules and Regulations of the Board of Registration for Professional Engineers and Professional Land Surveyors.)

Reverse side of this form may be used if more space is needed.

Record of original survey and citation of source of historical information (if corner is lost or obliterated). Description of corner monumentation evidence found and/or monument and accessories established to perpetuate the location of this corner. Sketch of relative location of monument, accessories, and reference points with course and distance to adjacent corner(s) (if determined in this survey). Method and rationale for reestablishment of lost or obliterated corner.

Section Corner: 4, 5, 8, 9; T14N; R64W; 6th P.M.



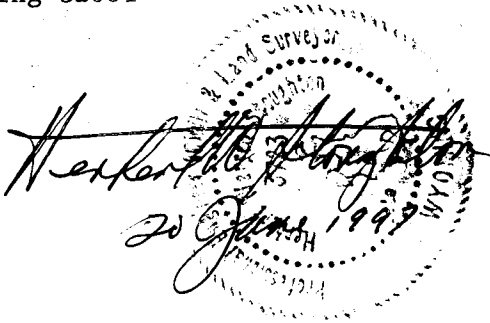
*Found: 80d nail with flagging. Replaced with 3/4 inch diameter rebar with 2 inch diameter aluminum cap. Monument buried 0.45 foot below crown of road.*

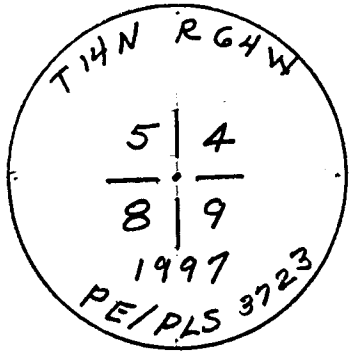
Date of Field Work: 14 June 1997 Office Reference: \_\_\_\_\_

**CROSS INDEX DIAGRAM**

1	2	3	4	5	6	7	8	9	10	11	12	13	14	15	16	17	18	19	20	21	22	23	24	25		
A																									B	
B																										C
C																										D
D																										E
E																										F
F																										G
G																										H
H																										I
I																										J
J																										K
K																										L
L																										M
M																										N
N																										O
O																										P
P																										Q
Q																										R
R																										S
S																										T
T																										U
U																										V
V																										W
W																										X
X																										Y
Y																										Z
Z																										

Firm/Agency, Address \_\_\_\_\_  
 PREPARED BY: \_\_\_\_\_  
 This corner record was prepared by me or under my direction and supervision.  
**SEAL & SIGNATURE**  
 Dr. Herbert W. Stoughton  
 Geodetic Engineer  
 2821 Carey Avenue  
 Cheyenne, Wyoming 82001  
 (307) 632-7460





Stamping

References:

1. Corner Record form by Donald M. Hopkins, P.E./P.L.S. 558, recorded 20 January 1989, at 9:05 p.m.
2. Corner Record form by Donald M. Hopkins, P.E./P.L.S. 558, recorded 20 January 1989, at 3:05 p.m.
3. Well location map by John B. Guyton, PLS 4919, dated: 14 September 1994.
4. Original GLD Field Notes: June 1871, pp. 23, 24, 25, 31.